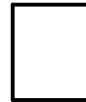


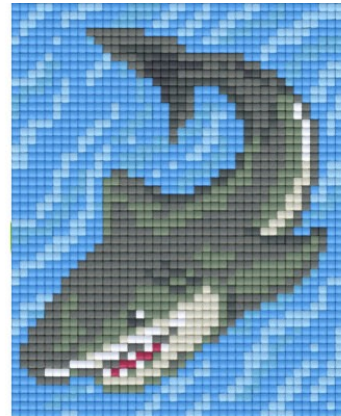
Anzahl an Basisplatten = 1 (4" x 5")
Anzahl der Pixel-Vierecke= 22
Anzahl der Farben = 10



Frame: 1 x 1 P

Erforderliche Pixel-Vierecke pro Farbe:

100 = 1
171 = 1
172 = 4
288 = 3
300 = 2
404 = 6
409 = 2
491 = 1
521 = 1
553 = 1

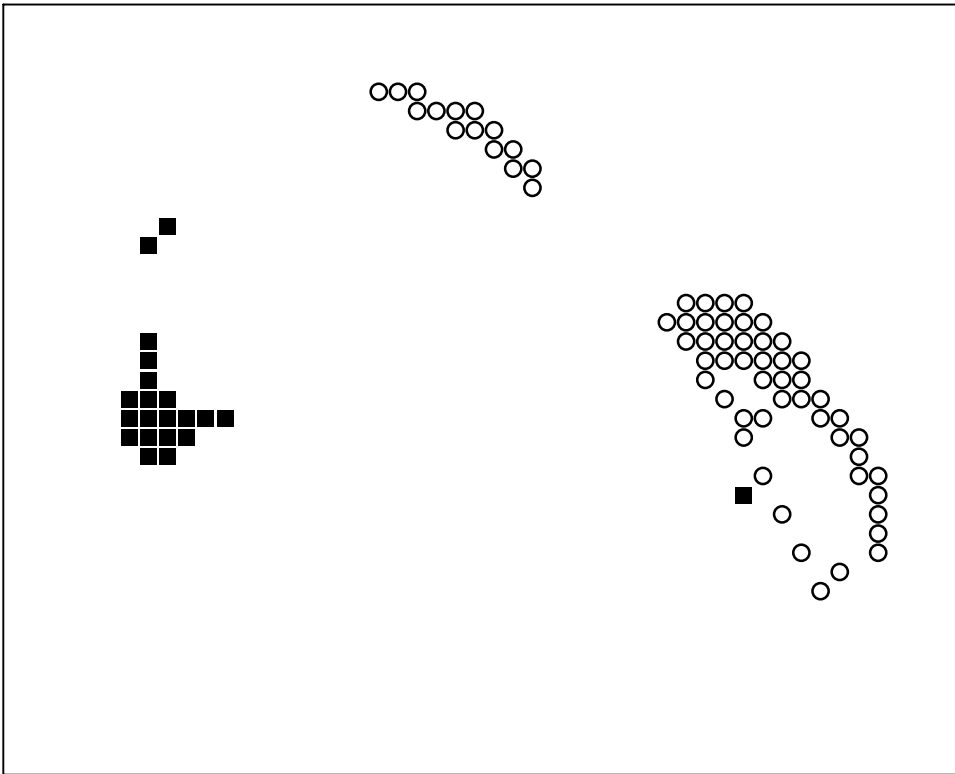




Basisplatte 1
Pixel-Farbe 100 = ■
Pixel-Farbe 171 = ○
Pixel-Farbe 172 = ×
Pixel-Farbe 288 = △



Basisplatte 1
Pixel-Farbe 300 = ■
Pixel-Farbe 404 = ○
Pixel-Farbe 409 = ×
Pixel-Farbe 491 = △



Basisplatte 1
Pixel-Farbe 521 = ■
Pixel-Farbe 553 = ○