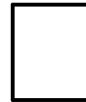


Anzahl an Basisplatten = 1 (4" x 5")
Anzahl der Pixel-Vierecke = 27
Anzahl der Farben = 20

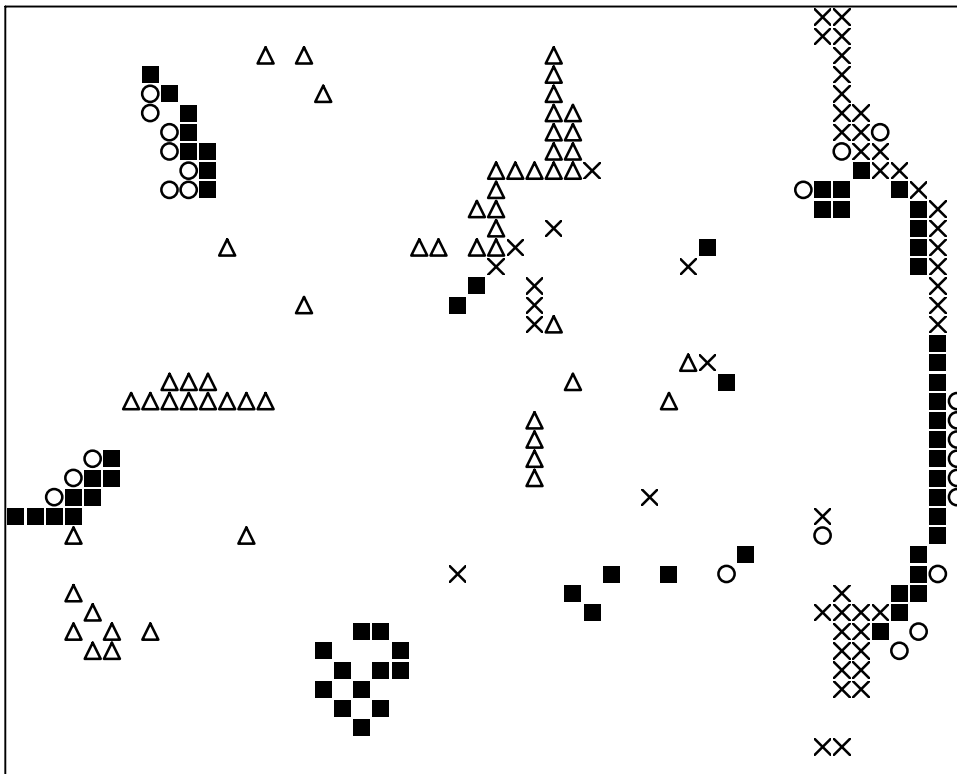


Frame: 1 x 1 P

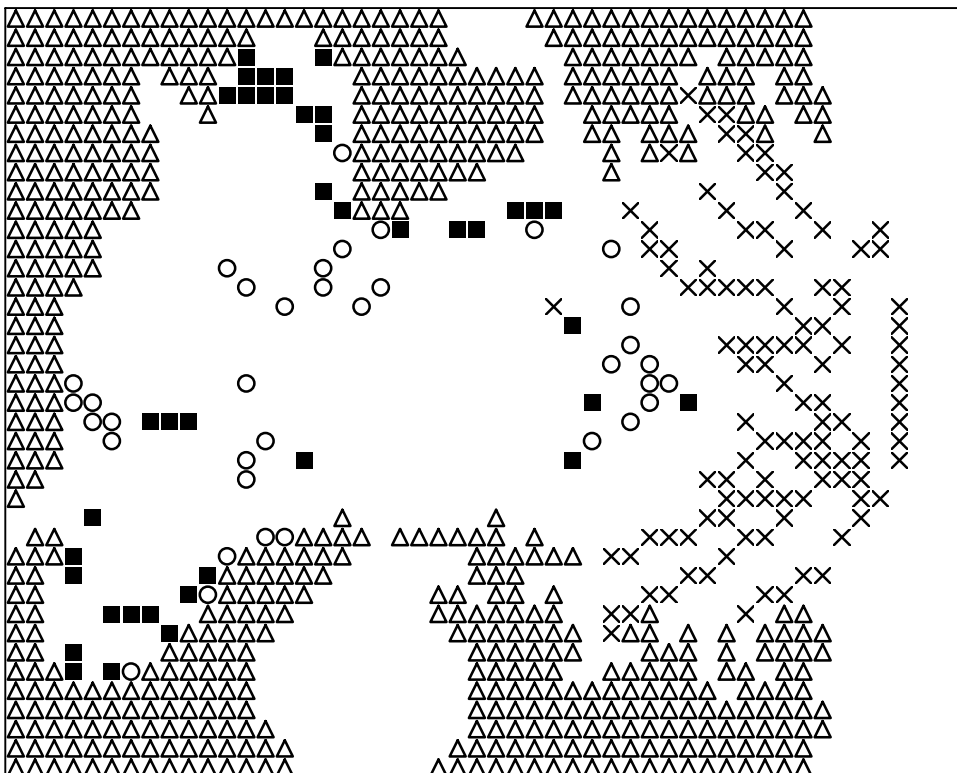
Erforderliche Pixel-Vierecke pro Farbe:

133 = 1
182 = 1
189 = 1
227 = 1
234 = 1
237 = 1
245 = 1
288 = 5
343 = 2
364 = 1
371 = 1
425 = 2
429 = 1
441 = 1
448 = 1
483 = 1
484 = 1
506 = 1
552 = 1
553 = 2

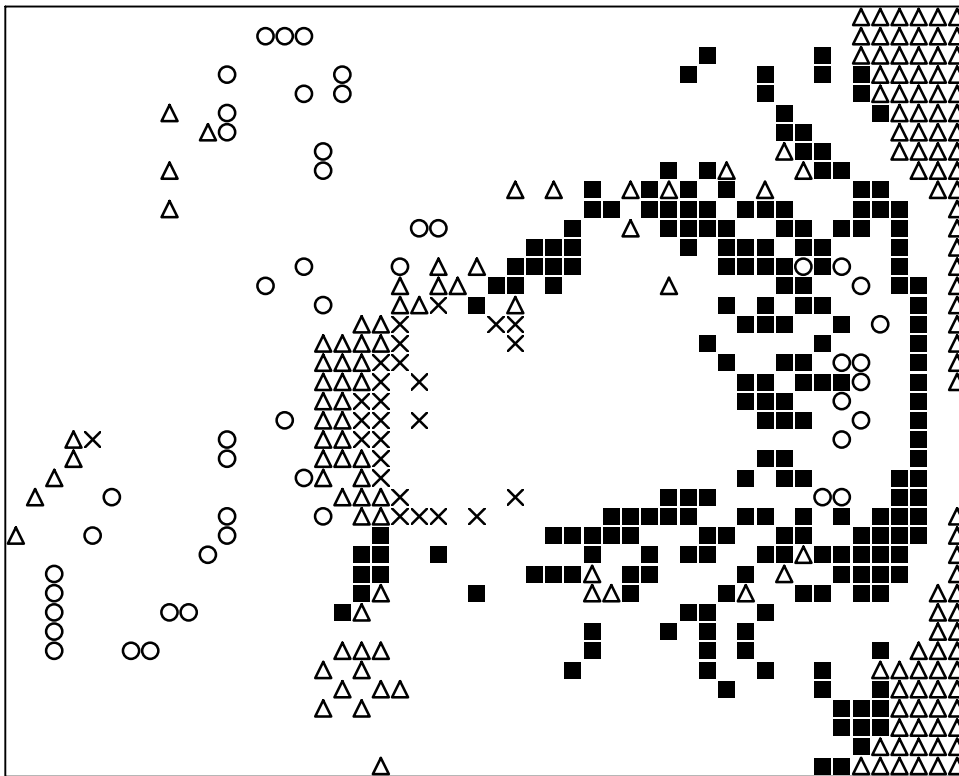




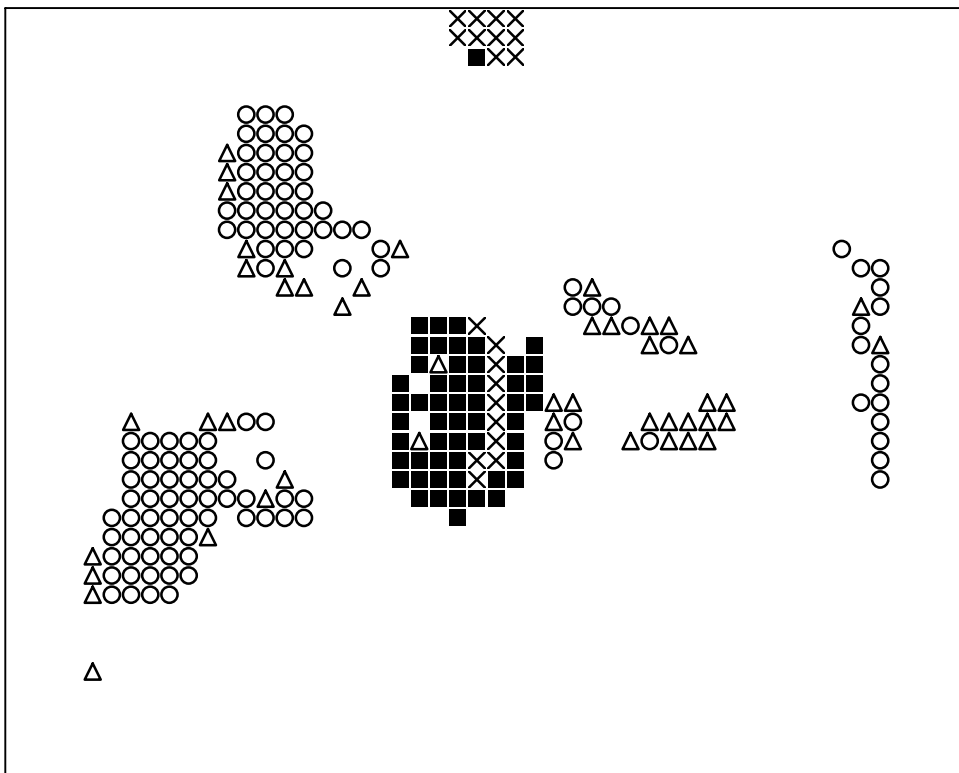
Basisplatte 1
Pixel-Farbe 133 = ■
Pixel-Farbe 182 = ○
Pixel-Farbe 189 = ×
Pixel-Farbe 227 = △



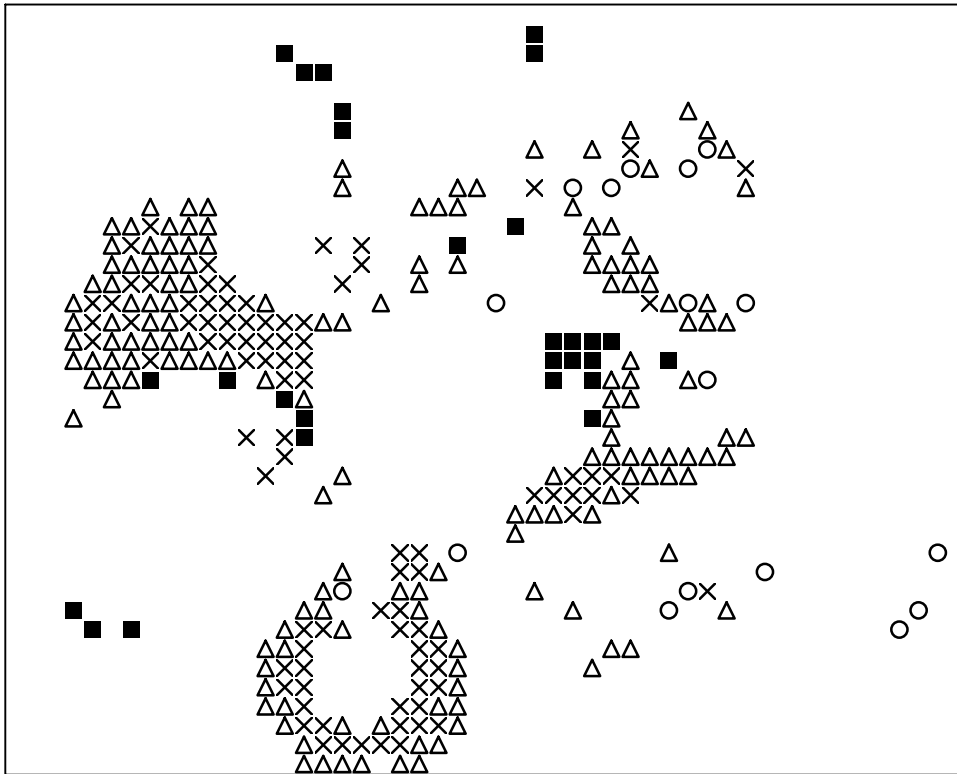
Basisplatte 1
Pixel-Farbe 234 = ■
Pixel-Farbe 237 = ○
Pixel-Farbe 245 = ×
Pixel-Farbe 288 = △



Basisplatte 1
Pixel-Farbe 343 = ■
Pixel-Farbe 364 = ○
Pixel-Farbe 371 = ×
Pixel-Farbe 425 = △



Basisplatte 1
Pixel-Farbe 429 = ■
Pixel-Farbe 441 = ○
Pixel-Farbe 448 = ×
Pixel-Farbe 483 = △



Basisplatte 1
Pixel-Farbe 484 = ■
Pixel-Farbe 506 = ○
Pixel-Farbe 552 = ×
Pixel-Farbe 553 = △