

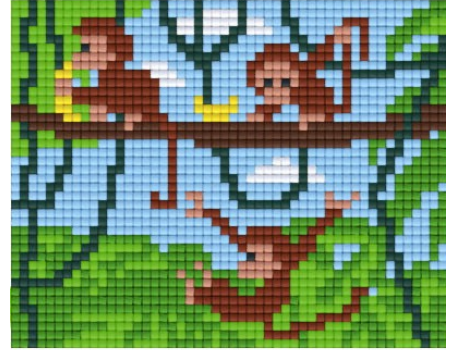


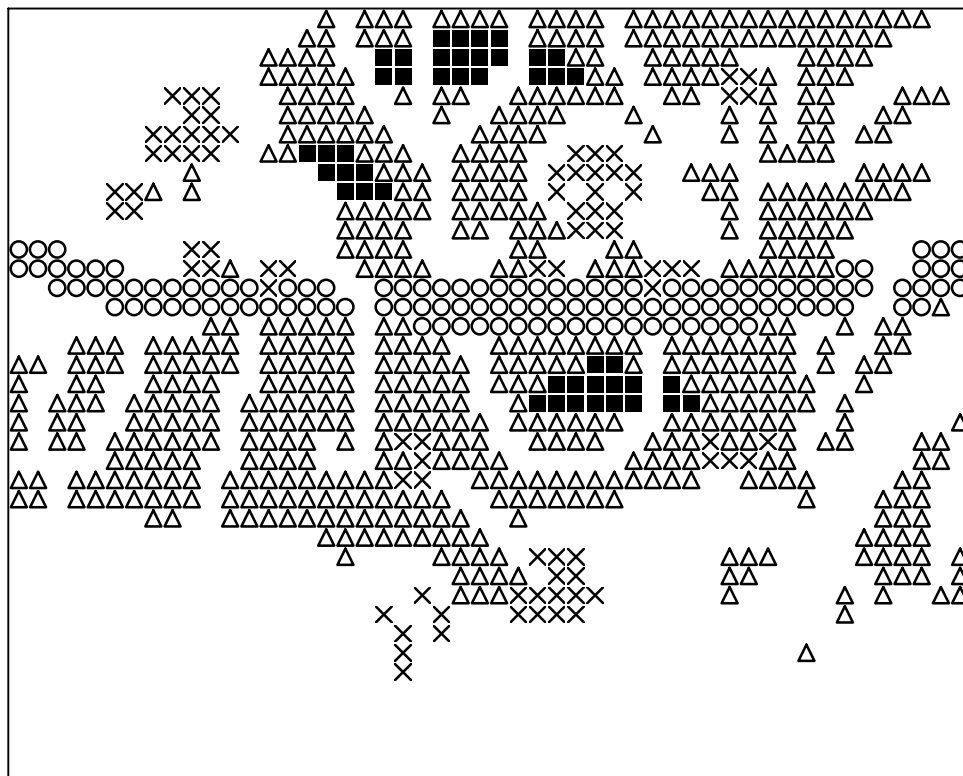
Frame: 1 x 1 L

Anzahl an Basisplatten = 1 (4" x 5")
Anzahl der Pixel-Vierecke = 19
Anzahl der Farben = 10

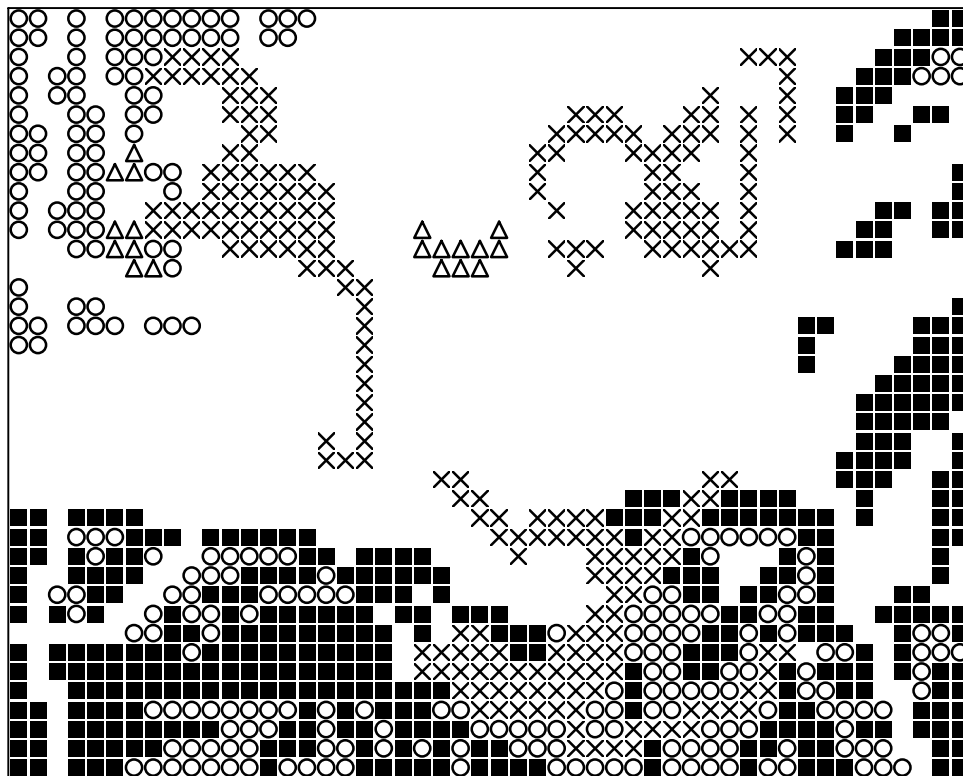
Erforderliche Pixel-Vierecke pro Farbe:

100 = 1
130 = 1
274 = 1
288 = 5
342 = 3
343 = 2
353 = 2
392 = 1
441 = 1
505 = 2

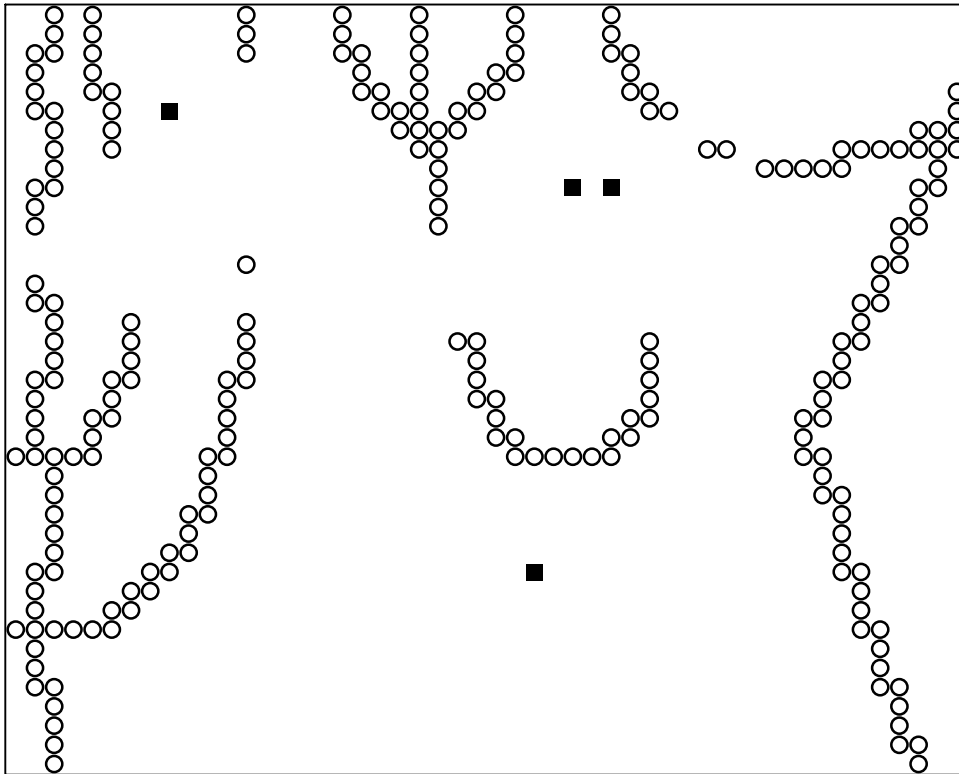




Basisplatte 1
Pixel-Farbe 100 = ■
Pixel-Farbe 130 = ○
Pixel-Farbe 274 = ×
Pixel-Farbe 288 = △



Basisplatte 1
Pixel-Farbe 342 = ■
Pixel-Farbe 343 = ○
Pixel-Farbe 353 = ×
Pixel-Farbe 392 = △



Basisplatte 1
Pixel-Farbe 441 = ■
Pixel-Farbe 505 = ○