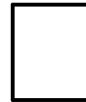




801345\_kuikentje  
2017-06-23

Durch internationals Patent geschützt

Anzahl an Basisplatten = 1 (4" x 5")  
Anzahl der Pixel-Vierecke = 24  
Anzahl der Farben = 14

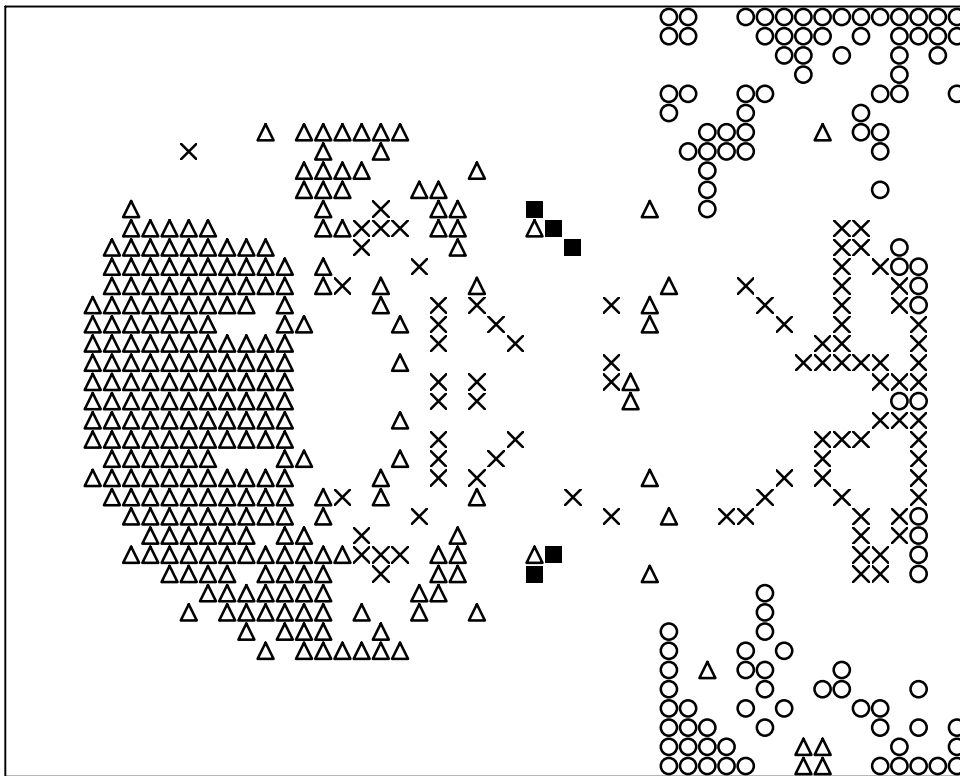


**Frame: 1 x 1 P**

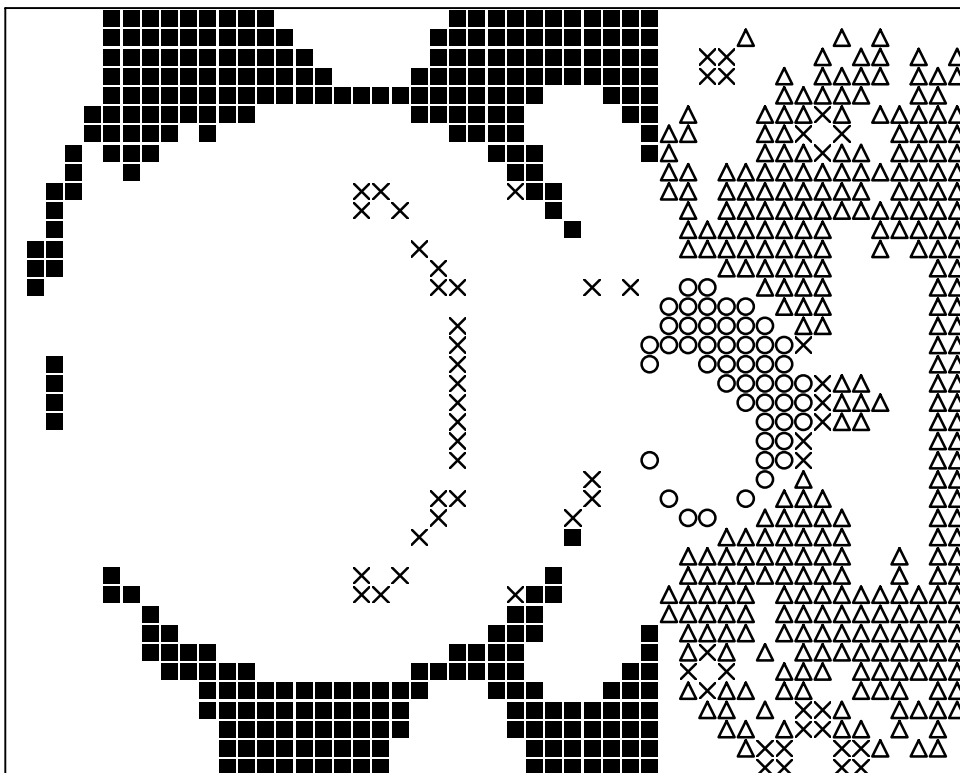
Erforderliche Pixel-Vierecke pro Farbe:

161 = 1  
245 = 1  
250 = 1  
256 = 3  
288 = 3  
307 = 1  
339 = 1  
343 = 3  
389 = 2  
391 = 2  
392 = 1  
540 = 1  
544 = 1  
552 = 3

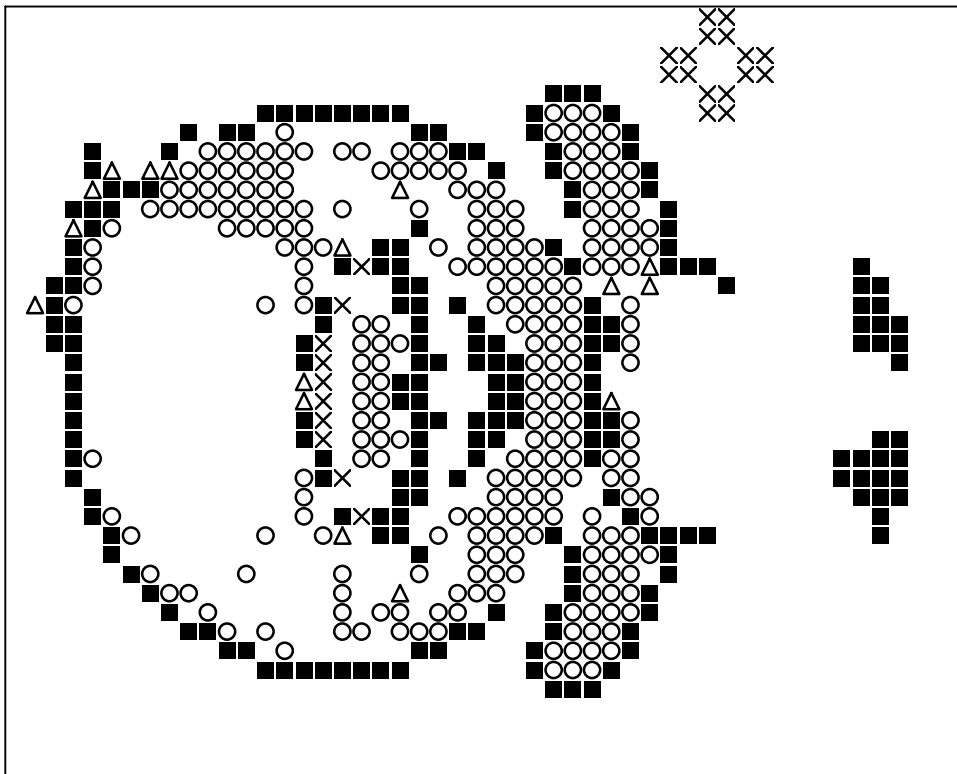




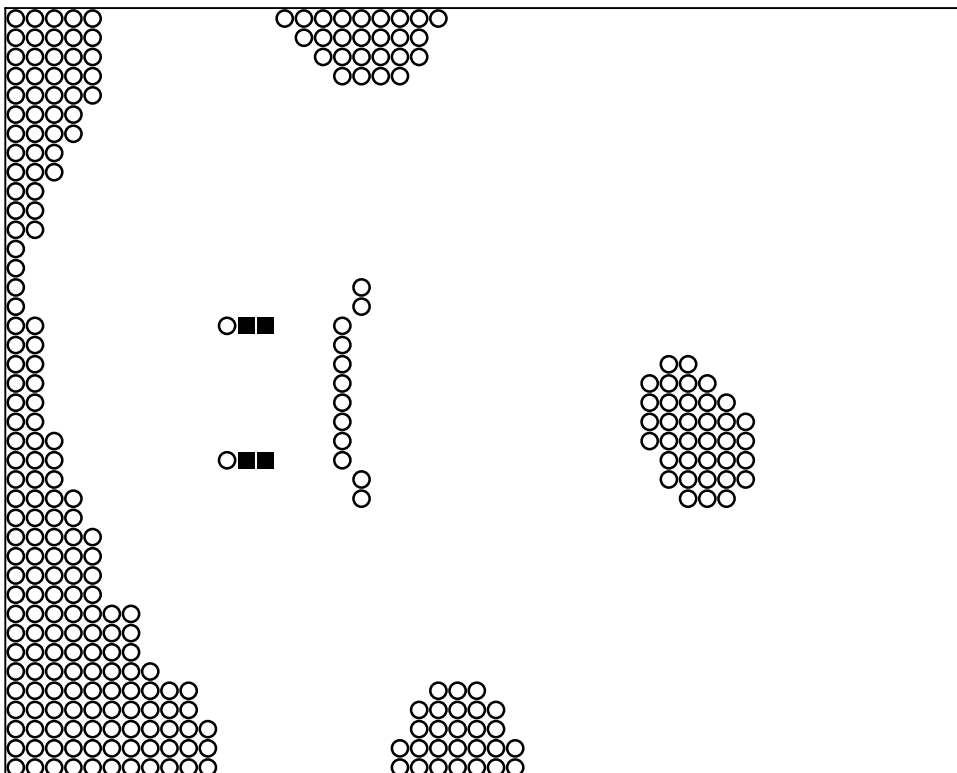
**Basisplatte 1**  
Pixel-Farbe 161 = ■  
Pixel-Farbe 245 = ○  
Pixel-Farbe 250 = ×  
Pixel-Farbe 256 = △



**Basisplatte 1**  
Pixel-Farbe 288 = ■  
Pixel-Farbe 307 = ○  
Pixel-Farbe 339 = ×  
Pixel-Farbe 343 = △



**Basisplatte 1**  
Pixel-Farbe 389 = ■  
Pixel-Farbe 391 = ○  
Pixel-Farbe 392 = ×  
Pixel-Farbe 540 = △



**Basisplatte 1**  
Pixel-Farbe 544 = ■  
Pixel-Farbe 552 = ○