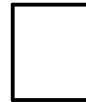


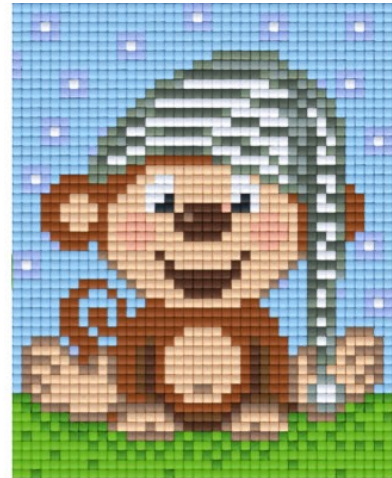
Anzahl an Basisplatten = 1 (4" x 5")
Anzahl der Pixel-Vierecke = 23
Anzahl der Farben = 15

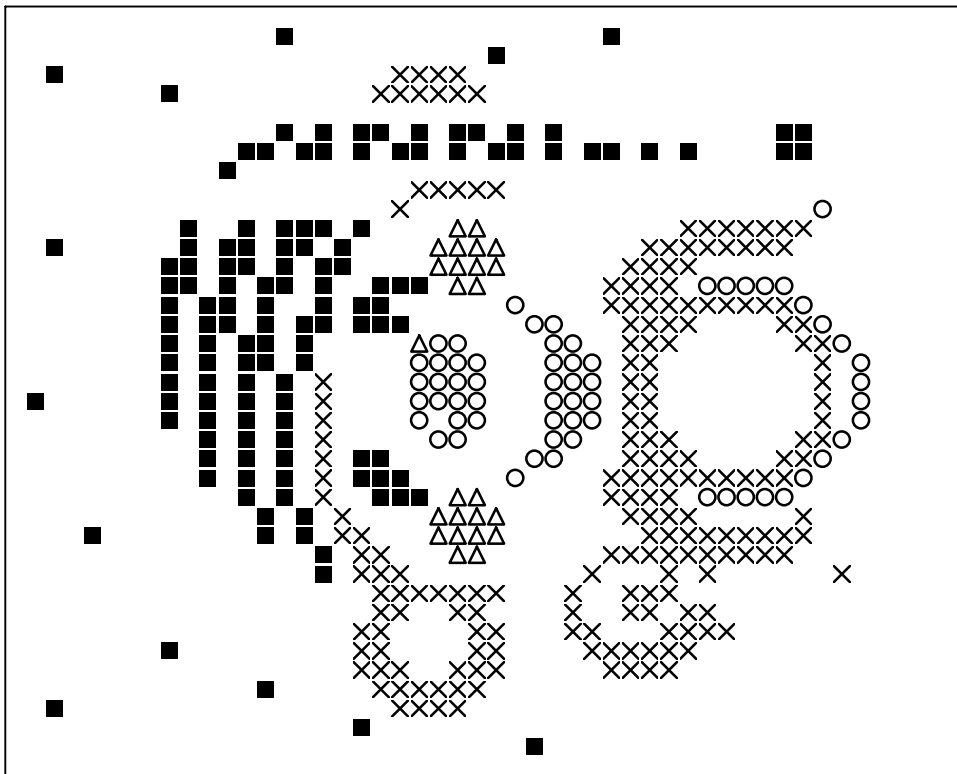


Frame: 1 x 1 P

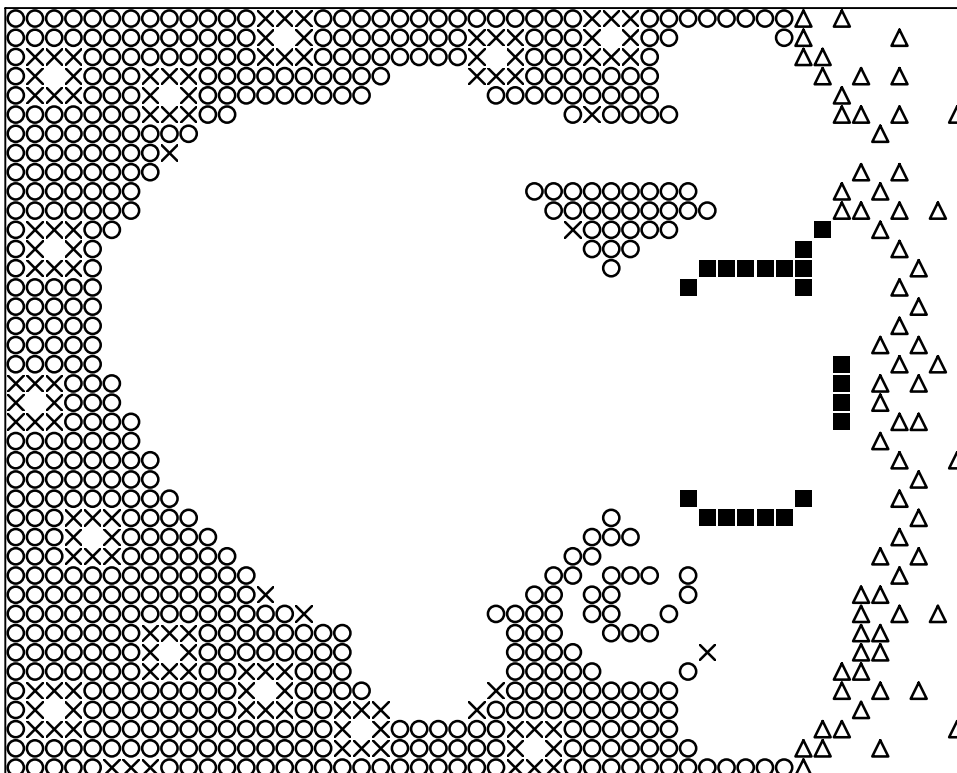
Erforderliche Pixel-Vierecke pro Farbe:

100 = 1
130 = 1
131 = 2
159 = 1
176 = 1
288 = 5
315 = 1
342 = 1
343 = 2
358 = 1
359 = 1
376 = 3
409 = 1
441 = 1
546 = 1

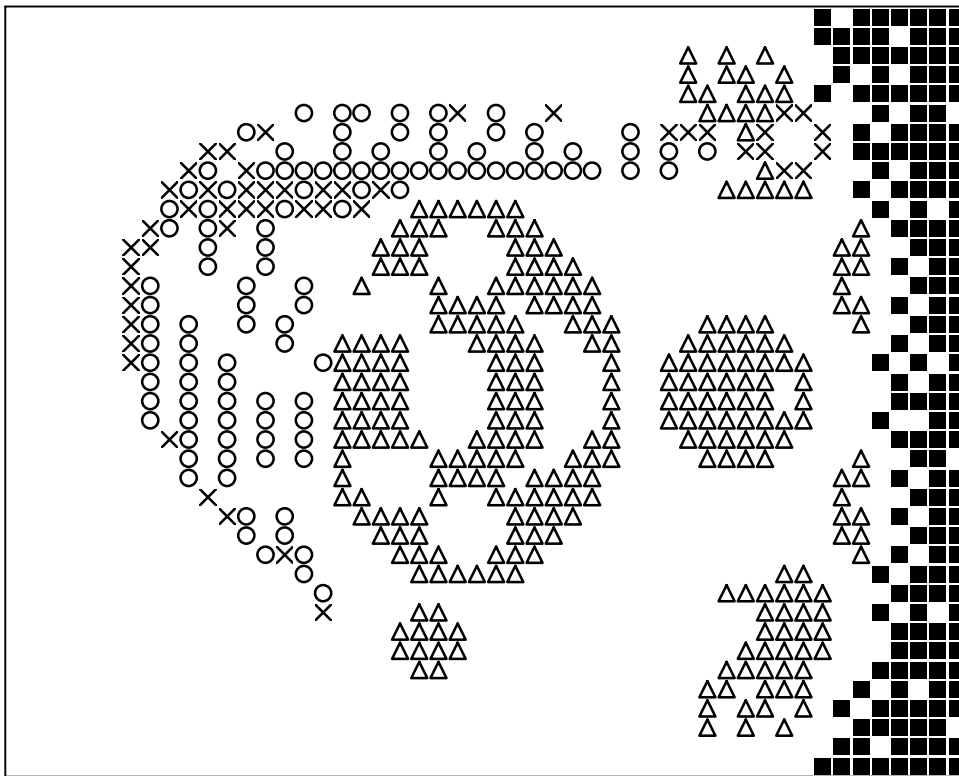




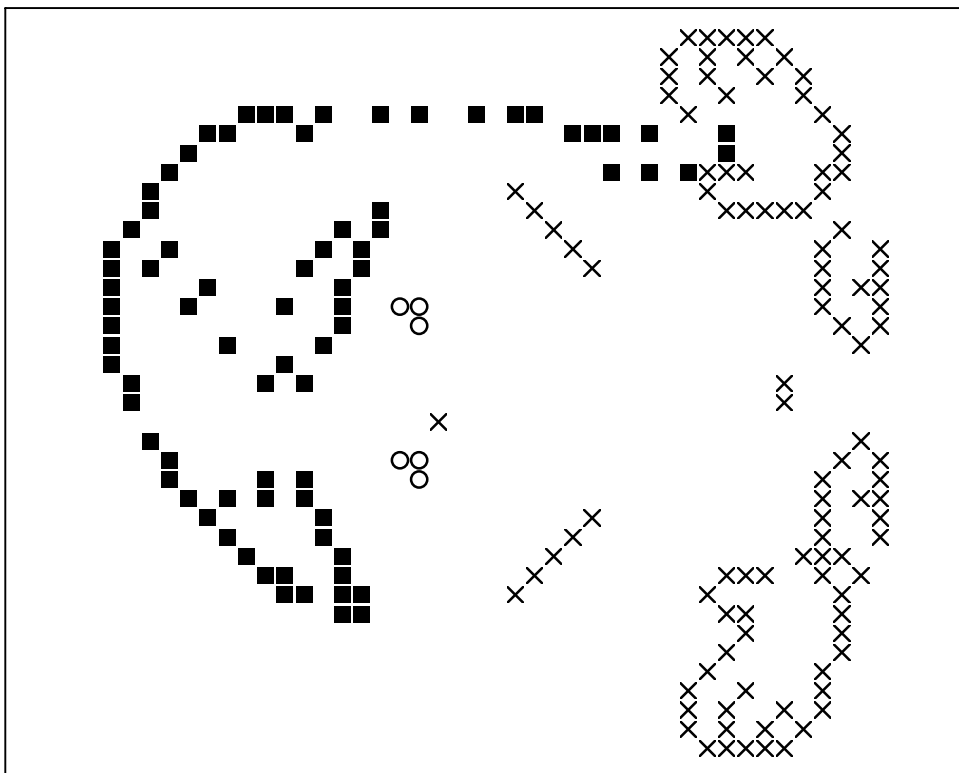
Basisplatte 1
Pixel-Farbe 100 = ■
Pixel-Farbe 130 = ○
Pixel-Farbe 131 = ×
Pixel-Farbe 159 = △



Basisplatte 1
Pixel-Farbe 176 = ■
Pixel-Farbe 288 = ○
Pixel-Farbe 315 = ×
Pixel-Farbe 342 = △



Basisplatte 1
Pixel-Farbe 343 = ■
Pixel-Farbe 358 = ○
Pixel-Farbe 359 = ×
Pixel-Farbe 376 = △



Basisplatte 1
Pixel-Farbe 409 = ■
Pixel-Farbe 441 = ○
Pixel-Farbe 546 = ×