

Teilleiste

www.pixelhobby.com

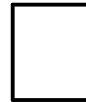
Anzahl an Basisplatten = 1 (4" x 5")
Anzahl der Pixel-Vierecke = 26
Anzahl der Farben = 18

Erforderliche Pixel-Vierecke pro Farbe:

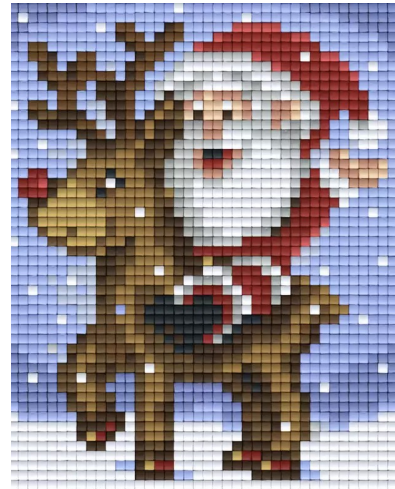
100 = 3
112 = 1
144 = 1
176 = 1
178 = 2
180 = 1
274 = 1
277 = 1
315 = 3
317 = 2
376 = 1
393 = 2
411 = 1
441 = 1
448 = 1
466 = 1
480 = 1
527 = 2

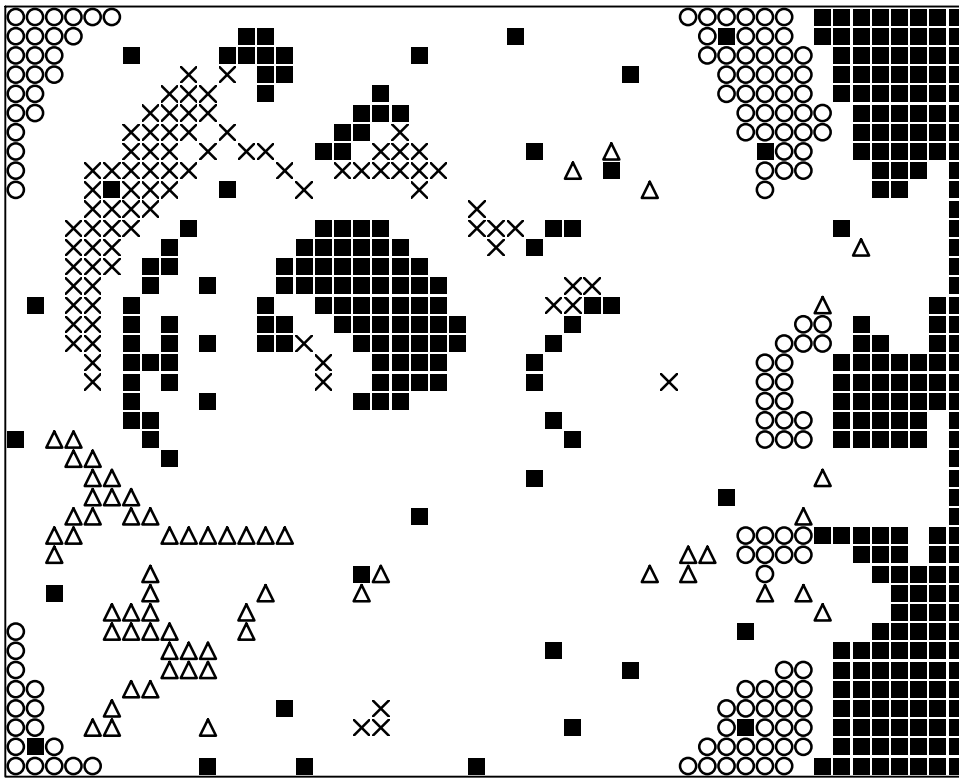
801455_Sante-with-Rudolf
2019-01-30

Durch internationals Patent geschützt

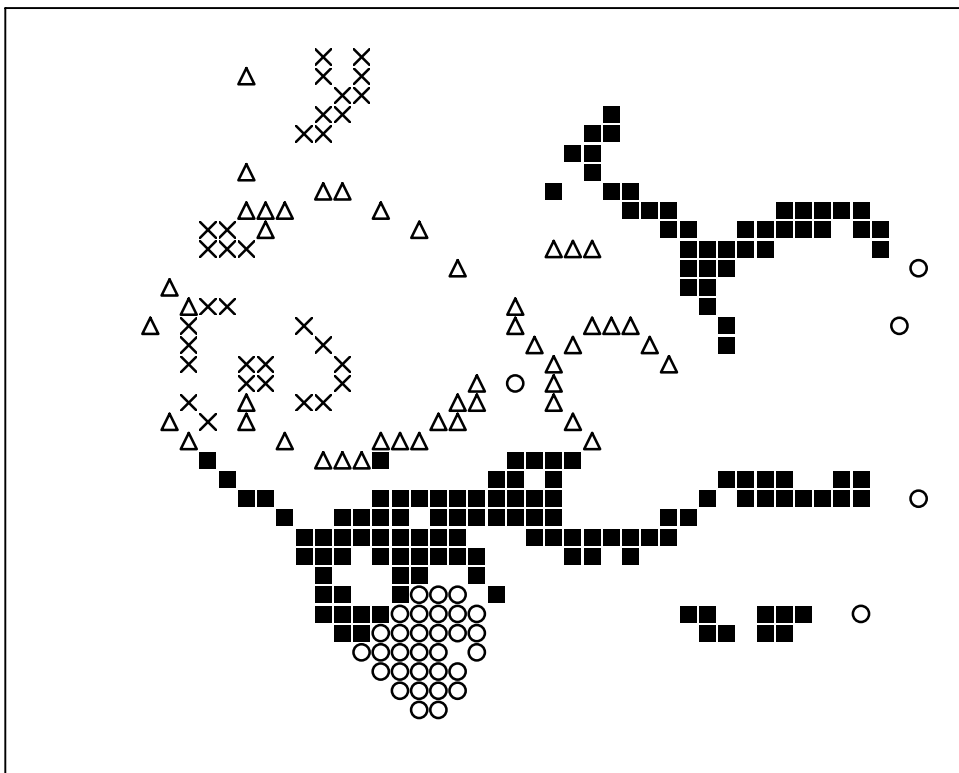


Frame: 1 x 1 P





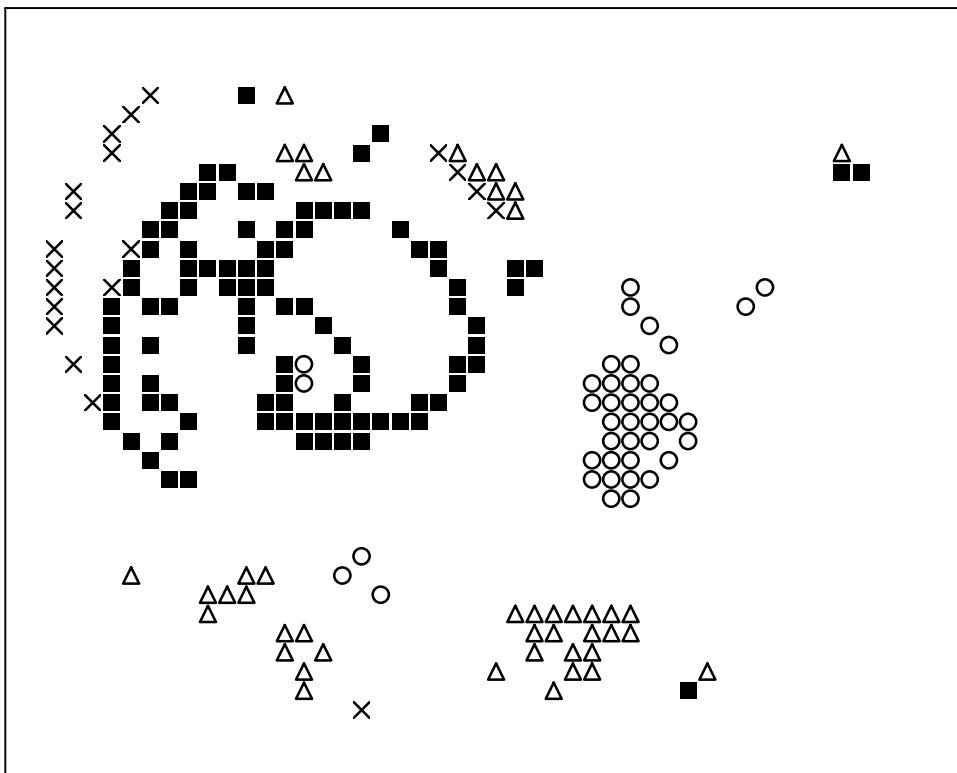
Basisplatte 1
Pixel-Farbe 100 = ■
Pixel-Farbe 112 = ○
Pixel-Farbe 144 = ×
Pixel-Farbe 176 = △



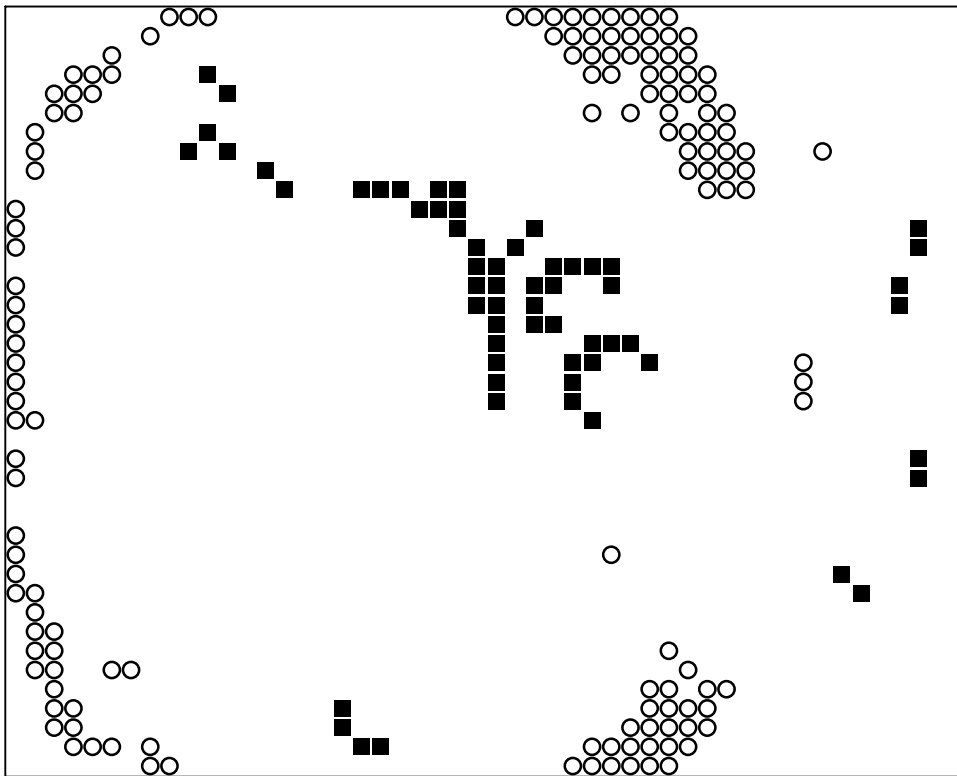
Basisplatte 1
Pixel-Farbe 178 = ■
Pixel-Farbe 180 = ○
Pixel-Farbe 274 = ×
Pixel-Farbe 277 = △



Basisplatte 1
Pixel-Farbe 315 = ■
Pixel-Farbe 317 = ○
Pixel-Farbe 376 = ×
Pixel-Farbe 393 = △



Basisplatte 1
Pixel-Farbe 411 = ■
Pixel-Farbe 441 = ○
Pixel-Farbe 448 = ×
Pixel-Farbe 466 = △



Basisplatte 1
Pixel-Farbe 480 = ■
Pixel-Farbe 527 = ○